

Appendix: Examples of MMAE ADC

Example 1: MMAE Conjugation with Monoclonal Human IgG1 Subtype

The ADC was prepared at CellMosaic following the User Manual (Rev. H) without any adjustments.

Kit lot number: 5508.S9.020918

Scale of the reaction: 3 mg (CM11409)

Specification of the final conjugates:

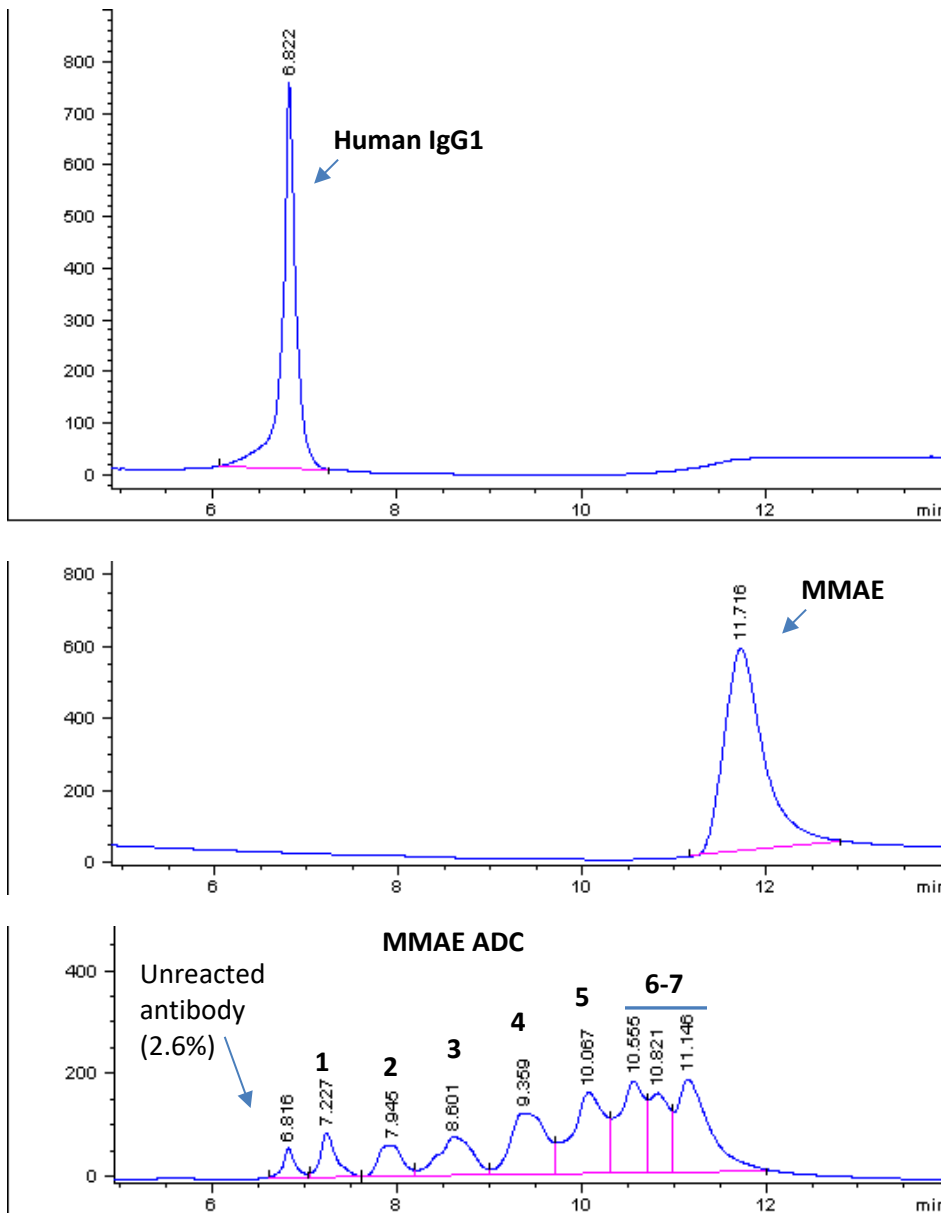
Calculated average DAR: 4.86 (Multiple DAR products)

Unreacted antibodies: 2.6%

Unreacted MMAE: 0%

ADC recovery: 81%

Figure 1: HIC HPLC analysis of monoclonal human IgG1, Mal-VC-PAB-MMAE, and purified conjugates



Example 2: MMAE Conjugation with Monoclonal Mouse IgG1 Subtype

The ADC was prepared by customer following the User Manual (Rev. H) with volume adjustments.

Kit lot number: 5508.S9.020918

Scale of the reaction: 2.3 mg (CM11409)

Specification of the final conjugates:

Calculated average DAR: 3.8 (two DAR products) Unreacted antibodies: 0%
Unreacted MMAE: 0% ADC aggregation: 0%

Figure 2: HIC HPLC analysis of monoclonal mouse IgG1 and purified conjugates

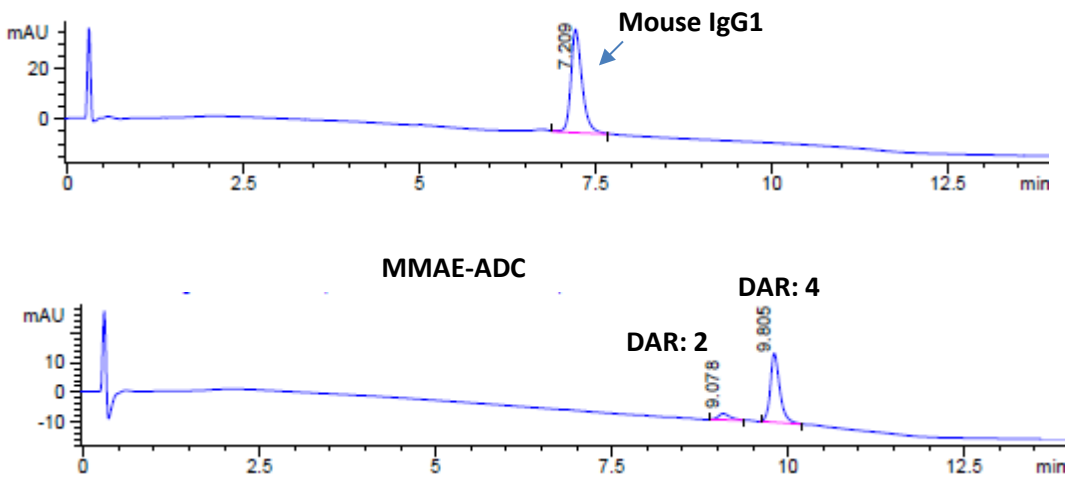
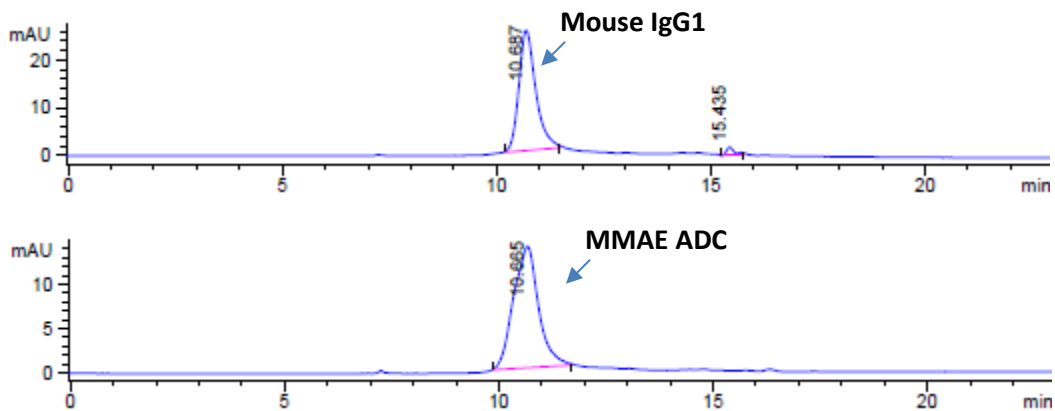


Figure 3: SEC HPLC analysis of monoclonal mouse IgG1 and purified conjugate



Example 3: MMAE Conjugation with Polyclonal IgG

The ADC was prepared by customer following the User Manual (Rev. H) without any adjustments.

Kit lot number: 5508.S9.032919

Scale of the reaction: 3 mg (CM11409)

Specification of the final conjugates:

Calculated average DAR: 3.98 by A248/A280 (0.715)

Unreacted antibodies: <2%

Unreacted MMAE: 0%

ADC aggregation: 6%

Figure 4: HIC HPLC analysis of polyclonal IgG and purified conjugates

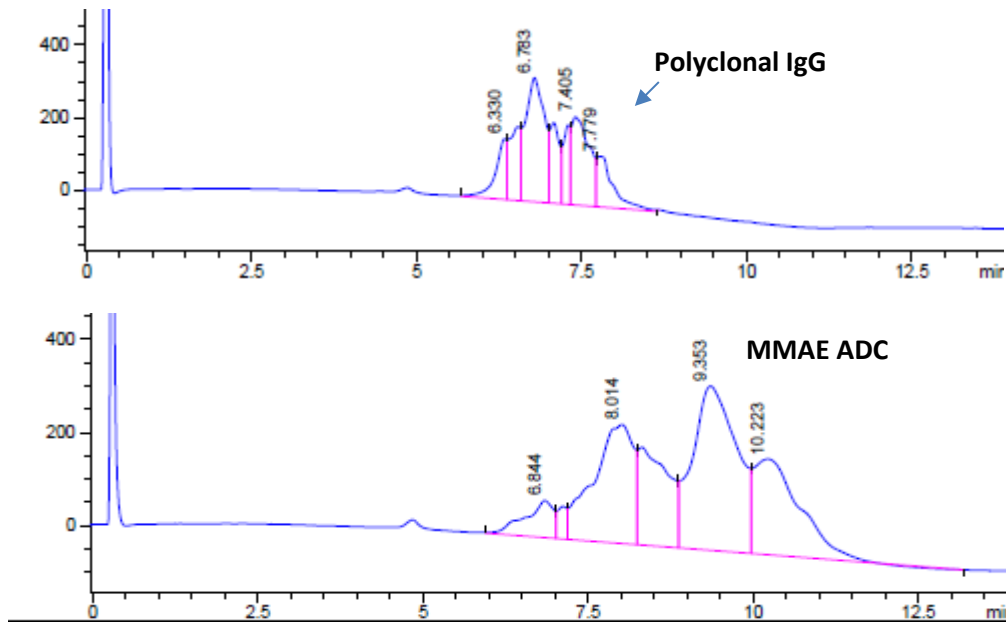


Figure 5: SEC HPLC analysis of polyclonal IgG and purified conjugate

