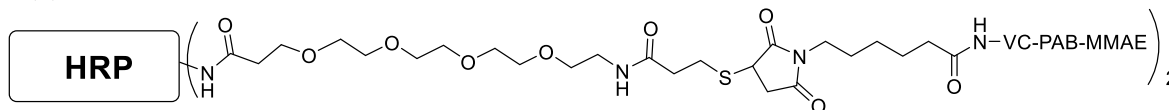


## Certificate of Analysis

### Description of the Material:

- (a) Chemical Name: HRP-MMAE (1:2) Conjugate with VC-PAB and dPEG4 linker (HRP labeled with two MMAE molecules)  
(b) Chemical Structure:



- (c) Molecular Weight: ~47 KDa  
(d) Appearance: brownish lyophilized powder in a 1.5 mL centrifuge tube.  
(e) Amount: each tube contains 0.5 mg of HRP-MMAE (1:2).  
(f) Reconstitution: dissolve in 278  $\mu$ L of deionized water to achieve 1.8 mg/mL in 1xPBS buffer containing sugar-based stabilizer (no preservative).

### SKU Code and Batch Number:

- (a) SKU Code: CM53210-0.5MG or CM53210-2MG  
(b) Lot Number: S297.S17P2.072820

### Purity Specifications and Results:

- (a) SEC HPLC analysis:  $\geq 99\%$  of two MMAE labeled HRP, free of any unreacted HRP and MMAE (Chromatography purified).  
(b) Activity:  $\geq 66$  units/mg protein [Unit Definition. One unit is amount of enzyme that will form 1.0 mg purpurogallin from pyrogallol in 20 sec. at pH 6.0 at 20 °C]  
(c) MMAE over HRP ratio: 2

**Intended Use:** For research and development use only.

**Hazard Information:** Hazard information for this compound is unknown and it should be handled with proper care.

**Shelf life, Storage/Stability as Supplied:** The shelf life of this compound has not been tested, but the compound is fairly stable at RT. The compound should be stored at -20°C.

Date of analysis: July 28, 2020

Retest Date: July 28, 2023



CellMosaic, Inc. www.cellmosaic.com  
10 A Roessler Road, Woburn, MA 01801, USA.

**SEC HPLC Analysis of HRP-MMAE  
(1:1) (Lot# S297.S17P1.072820)**

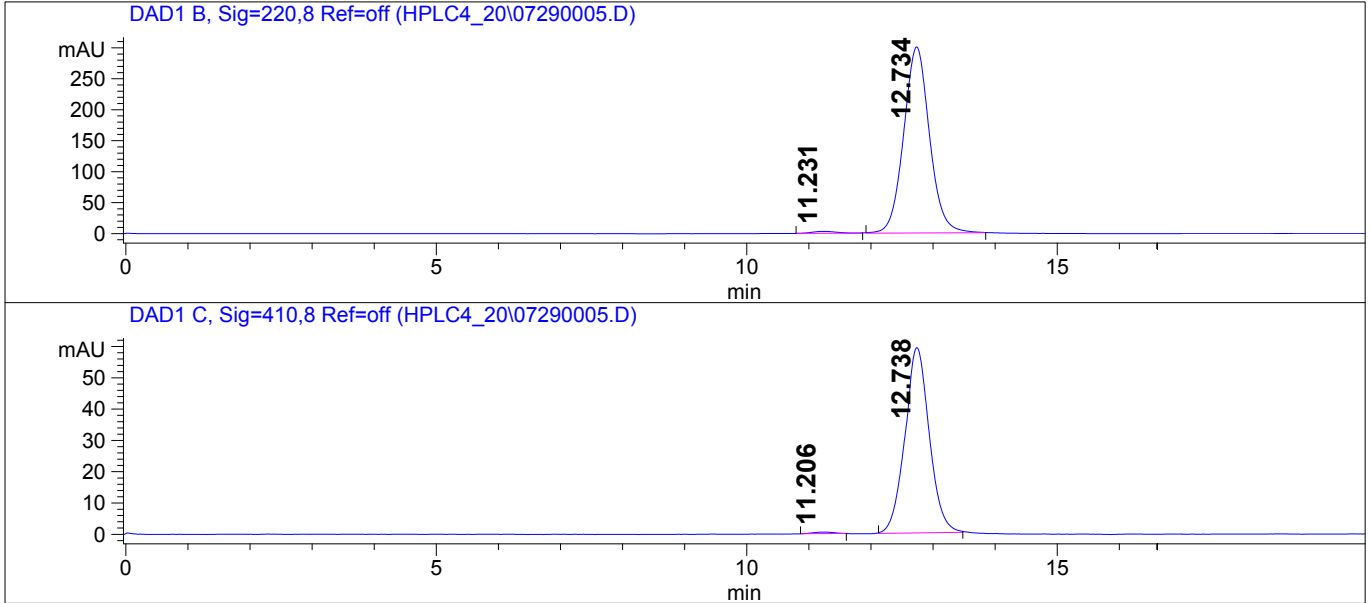
HPLC ANALYSIS DATA

Data Acquired By: QC  
Sample Location: Vial 62  
Sample Name: S297.S17P1.0728

Actual injection Volume: 10.0 uL  
Sequence Name:  
Method: C:\HPCHEM\1\METHODS\TSK-L5.M  
Pressure: 49.8 bar  
Flow: 0.750 mL/min  
Temp (C): 25.0 C

-- SAMPLE INFORMATION --  
S297.S17P1.0728  
x2 ->

CHROMATOGRAM (UV/Vis)



Signal Description Wavelength (nm), Bw	Retention Time [Min.]	Area [mAU.s]	Area %
DAD1 B, Sig=220,8 Ref=off	11.231	89.8	1.0
	12.734	8694.5	99.0
DAD1 C, Sig=410,8 Ref=off	11.206	11.1	0.7
	12.738	1617.1	99.3

\*\*\*\*\*END OF REPORT\*\*\*\*\*