

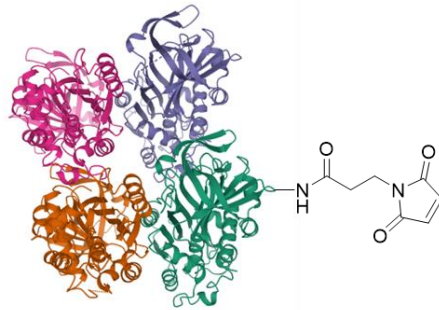


CellMosaic, Inc.
10A Roessler Road
Woburn, MA 01801, USA
Phone: 781-463-0002; Fax: 781-998-4694; E-mail: info@cellmosaic.com

Maleimide Activated Ova HL

Lyophilized powder, 2 mg each tube, $\geq 99\%$ conjugates by HPLC

Product Number: **CM52105**
Package: 1x2 mg and 3x2 mg



Product Description

CellMosaic's maleimide activated chicken egg albumin (ovalbumin) HL is designed for direct conjugation of ovalbumin with proteins, peptides, or other ligands containing free sulfhydryl groups for use in immunization. This product consists of a highly loaded ovalbumin that has been modified with BMPS (N-(β -maleimidopropoxy) succinimide ester) to attach 10-20 maleimide groups per ovalbumin molecule.

Application

- Suitable for loading large number of peptides and other antigens onto ovalbumin for antibody production.

Key Features of this Maleimide Activated Ova

- Lyophilized powder and ready for conjugation reaction after reconstitution with water, no need for external buffer
- **High loading** with 10-20 average maleimide groups per ovalbumin