



CellMosaic, Inc.
10A Roessler Road
Woburn, MA 01801, USA
Phone: 781-463-0002; Fax: 781-998-4694; E-mail: info@cellmosaic.com

Certificate of Analysis

Description of the Material:

- (a) Chemical Name: BSA Creatine L8
- (b) Molecular Weight: 69.7KDa
- (c) Appearance: clear solution in PBS buffer
- (d) Concentration: 1.63 mg/mL solution
- (e) Amount: each tube contains 0.5 mg of conjugate

Material Code and Batch Number:

- (a) Part Number: CM52132-0.5MG
- (b) Lot Number: S374.S7.102621

Purity, MS Data, and Loading:

- (a) HPLC Analysis: $\geq 99\%$ conjugate
- (b) MALDI-TOF MS Data for Intact Conjugate: 69,660 Da
- (c) Average Creatine Molecules per BSA: 12.7 by difference in MALDI-TOF MS

Intended Use: For research and development use only.

Applications: Immunization, ELISA, IHC, WB, Immunomicroscopy, Dot Blot, Flow Cytometry (recommended concentration for assay: 0.01-0.1 $\mu\text{g/mL}$)

Hazard Information: No known OSHA hazards. See SDS for details.

Shelf Life, Storage / Stability as supplied: The conjugate is fairly stable as solution at ambient temperature. Recommended long term storage is at -20°C or preferably in a -80°C freezer. The solution may be able to stay at $2-8^{\circ}\text{C}$ for a few weeks or -20°C for up to 1 year.

Expiration Date: 1 year after receiving if stored at -20°C or below.

Data Appendix: Size exclusion HPLC and MALDI-TOF MS Data.



CellMosaic, Inc. www.cellmosaic.com
10 A Roessler Road, Woburn, MA 01801, USA.

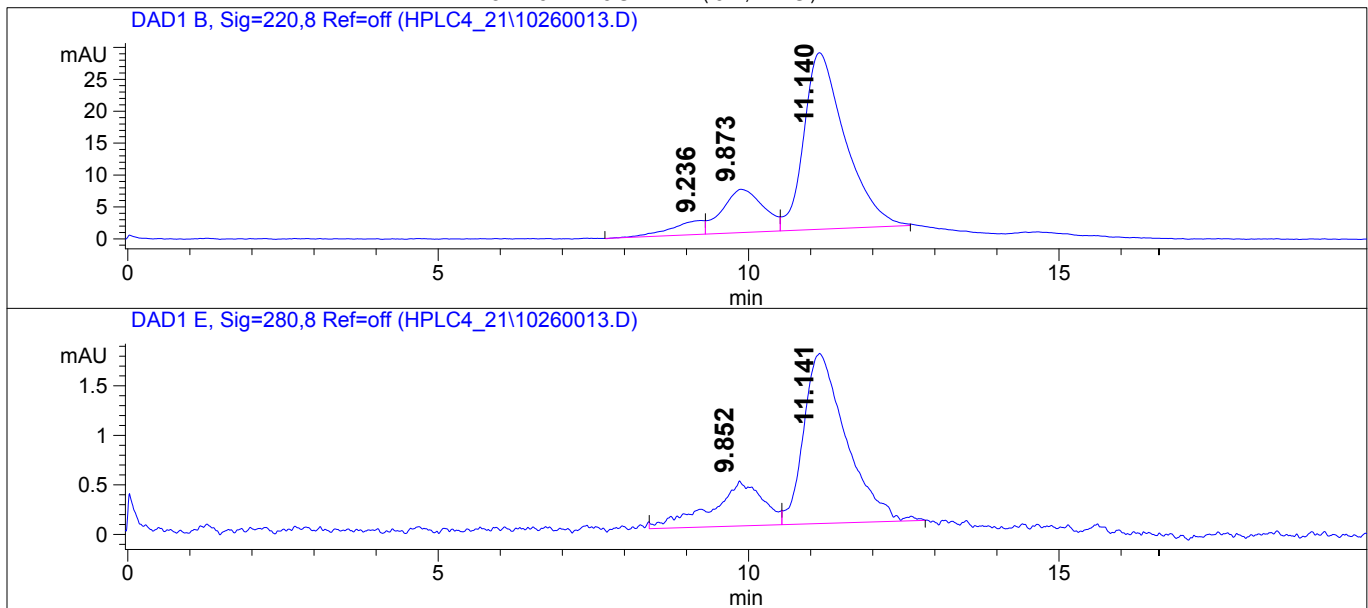
Size Exclusion HPLC Analysis Data

Data Acquired By: QC
Sample Location: Vial 11
Sample Name: S374.S7.102621

Actual injection Volume: 20.0 uL
Sequence Name:
Method: C:\HPCHEM\1\METHODS\TSK-L3.M
Pressure: 47.4 bar
Flow: 0.750 mL/min
Temp (C): 25.0 C

-- SAMPLE INFORMATION --
S374.S7.102621
x8 ->

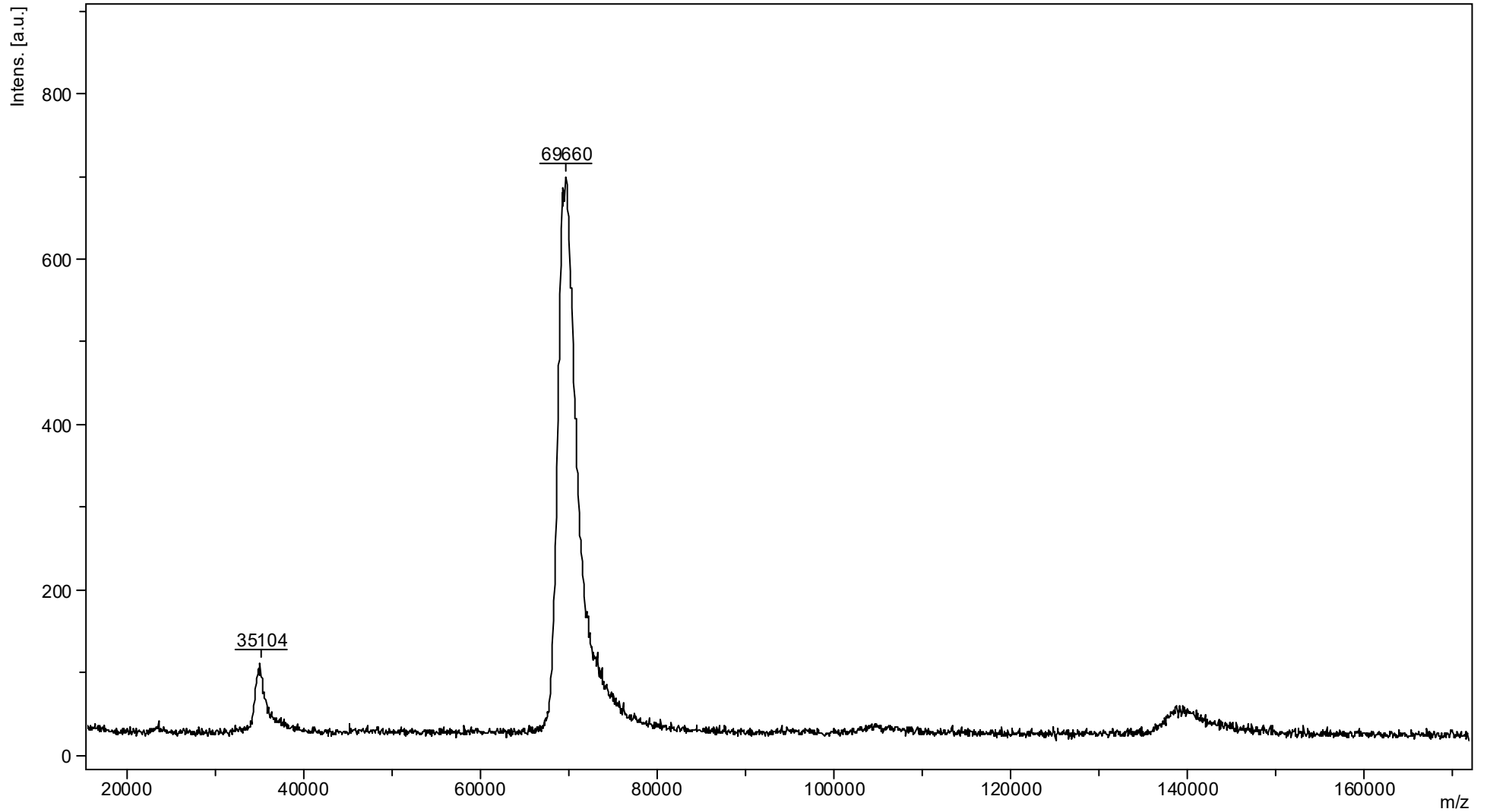
CHROMATOGRAM (UV/Vis)



Signal Description Wavelength (nm), Bw	Retention Time [Min.]	Area [mAU.s]	Area %
DAD1 B, Sig=220,8 Ref=off	9.236	83.2	4.9
	9.873	313.6	18.6
	11.140	1288.3	76.5
DAD1 E, Sig=280,8 Ref=off	9.852	26.1	24.1
	11.141	82.0	75.9

*****END OF REPORT*****

MALDI-TOF MS of BSA Creatine L8 (Lot#: S374.S7.102621)



MALDI-TOF MS of BSA

