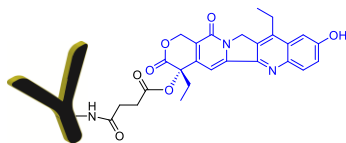


Certificate of Analysis

Description of the Material:

- (a) Product Name: ADC Control hIgG1-SN38
- (b) Chemical Structure:



- (c) Molecular Weight: 148.4KDa
- (d) Appearance: Colorless to white lyophilized powder in a microcentrifuge tube
- (e) Amount: Each tube contains either 100 µg or 500 µg product
- (f) Reconstitution: Dissolve in 100 µL (for 100 µg tube) or 500 µL (for 500 µg tube) deionized water to achieve 1 mg/mL in 1xPBS buffer containing sugar-based stabilizer (no preservative)

Antibody Information:

- (a) Immunogen: HEL (Hen Egg Lysozyme)
- (b) Species Reactivity: Chicken
- (c) Expression Host: CHO-S cell line
- (d) Class: Human IgG1, Kappa
- (e) Antibody Type: Monoclonal
- (f) Applications: ELISA, FACS, IF, IHC, *in vivo* studies, IP, WB
- (g) Purification Method: Affinity purified

SKU Code and Batch Number:

- (h) SKU Code: CM51102-100UG, CM51102-500UG, CM51102-1MG
- (i) Lot Number: S412.S13.0801B

Purity, Endotoxin, and DAR Data:

- (a) HPLC Purity: ≥99% of SN38 labeled antibody by SEC HPLC (14% of aggregated), free of any unreacted SN38.
- (b) Endotoxin Level: ≤0.5 EU/mg by the LAL method
- (c) MALDI-TOF MS Data for Intact Conjugate: 148,431 Da
- (d) Drug over Antibody Ratio (DAR):

| Method | Average DAR |
|---------------------------------|-------------|
| UV Ratio (A248/A280) (SEC HPLC) | 4.6 |
| Difference MALDI-TOF MS | 3.2 |

Intended Use: For research and development use only.

Hazard Information: See SDS.

Shelf life, Storage/Stability: The conjugate is fairly stable as solid at ambient temperature. Recommended long term storage is at -20°C or preferably in a -80°C freezer. After reconstitution, the stock solution should be used up within few hours.

Expiration date: 1 year after receiving if stored at -20°C or below.

Data Appendix: Size exclusion HPLC and MALDI-TOF MS Data.



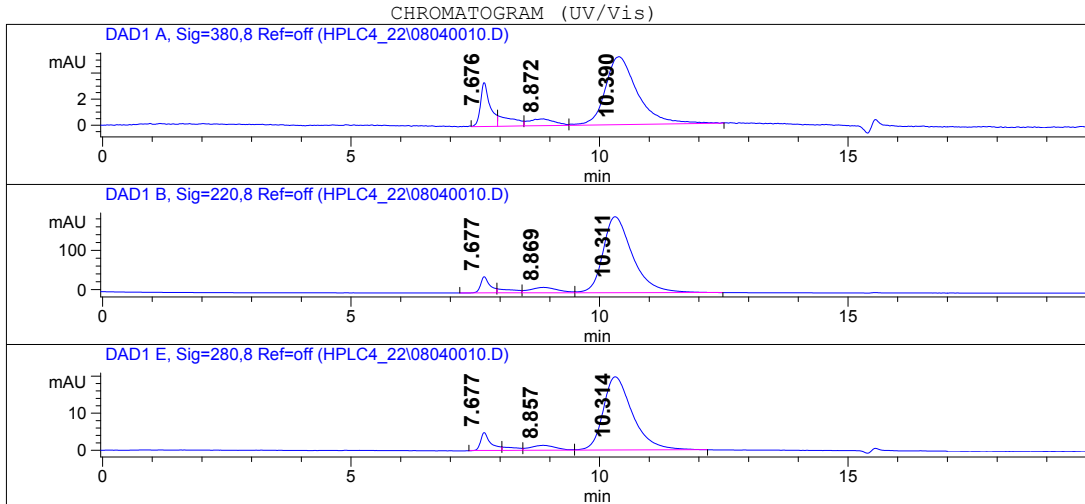
CellMosaic, Inc. www.cellmosaic.com
 10 A Roessler Road, Woburn, MA 01801, USA.

HPLC ANALYSIS DATA

Data Acquired By:QC
 Sample Location:Vial 52
 Sample Name:S412.S13.0801B

Actual injection Volume:10.0 uL
 Sequence Name:
 Method:C:\HPCHEM\1\METHODS\TSK-L5.M
 Pressure: 36.0 bar
 Flow: 0.750 mL/min
 Temp (C): 25.0 C

-- SAMPLE INFORMATION --
 S412.S13.0801B



| Signal Description Wavelength (nm), Bw | Retention Time [Min.] | Area [mAU.s] | Area % |
|---|--------------------------|-----------------|-----------|
| DAD1 A, Sig=380,8 Ref=off | 7.676 | 45.0 | 14.1 |
| | 7.948 | 18.0 | 5.7 |
| | 8.872 | 18.7 | 5.9 |
| DAD1 B, Sig=220,8 Ref=off | 10.390 | 236.4 | 74.3 |
| | 7.677 | 538.2 | 5.8 |
| | 7.936 | 238.0 | 2.6 |
| DAD1 E, Sig=280,8 Ref=off | 8.869 | 539.0 | 5.8 |
| | 10.311 | 8016.6 | 85.9 |
| | 7.677 | 67.8 | 7.2 |
| | 8.036 | 18.4 | 1.9 |
| | 8.857 | 47.5 | 5.0 |
| | 10.314 | 812.9 | 85.9 |

*****END OF REPORT*****

MALDI-TOF Mass Analysis of hIgG1-SN38 Conjugate

