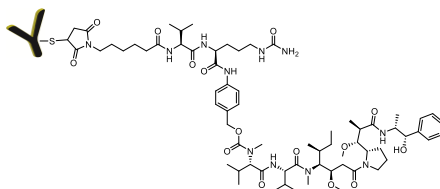


Certificate of Analysis

Description of the Material:

- (a) Product Name: ADC Control hIgG1-MMAE
(b) Chemical Structure:



- (c) Molecular Weight: 152 KDa
(d) Appearance: Colorless to white lyophilized powder
(e) Amount: Each tube contains either 100 µg or 500 µg product
(f) Reconstitution: Dissolve in 100 µL (for 100 µg tube) or 500 µL (for 500 µg tube) deionized water to achieve 1 mg/mL in 1xPBS buffer containing sugar-based stabilizer (no preservative)

Antibody Information:

- (a) Immunogen: HEL (Hen Egg Lysozyme)
(b) Species Reactivity: Chicken
(c) Expression Host: CHO-S cell line
(d) Class: Human IgG1, Kappa
(e) Antibody Type: Monoclonal
(f) Applications: ELISA, FACS, IF, IHC, *in vivo* studies, IP, WB
(g) Purification Method: Affinity purified

SKU Code and Batch Number:

- (h) SKU Code: CM51100-100UG, CM51100-500UG, or CM51100-1MG
(i) Lot Number: S409.S20.0531D

Purity, Endotoxin, and DAR Data:

- (a) HPLC Purity: ≥99% of MMAE labeled antibody by SEC HPLC (36% of aggregated), free of any unreacted MMAE.
(b) Endotoxin Level: ≤0.5 EU/mg by the LAL method
(c) MALDI-TOF MS Data for Intact Conjugate: 151,966 Da
(d) Drug over Antibody Ratio (DAR):

Method	Average DAR
UV Ratio (A248/A280)	4.8
HIC HPLC	5.1
Difference in MALDI-TOF MS	3.8

Intended Use: For research and development use only.

Hazard Information: See SDS.

Shelf life, Storage/Stability: The product is fairly stable as solid at ambient temperature. Recommended long-term storage is at -20°C or preferably in a -80°C freezer. The reconstituted lyophilized tubes should be used immediately following reconstitution with sterile water. If not used immediately, the reconstituted tubes can be stored for up to 4 hours in a 2–8°C refrigerator.

Expiration Date: 1 year after receiving if stored at -20°C or below.

Data Appendix: Size exclusion HPLC.

Injection date: Fri, 7. Jun. 2024
C:\HPCHEM\1\DATA\HPLC4_24\06070005.D
Instrument:Instrument 1

Injection Time:11:54:41 AM
Report Style:CM_Ext



CellMosaic, Inc. www.cellmosaic.com
10 A Roessler Road, Woburn, MA 01801, USA.

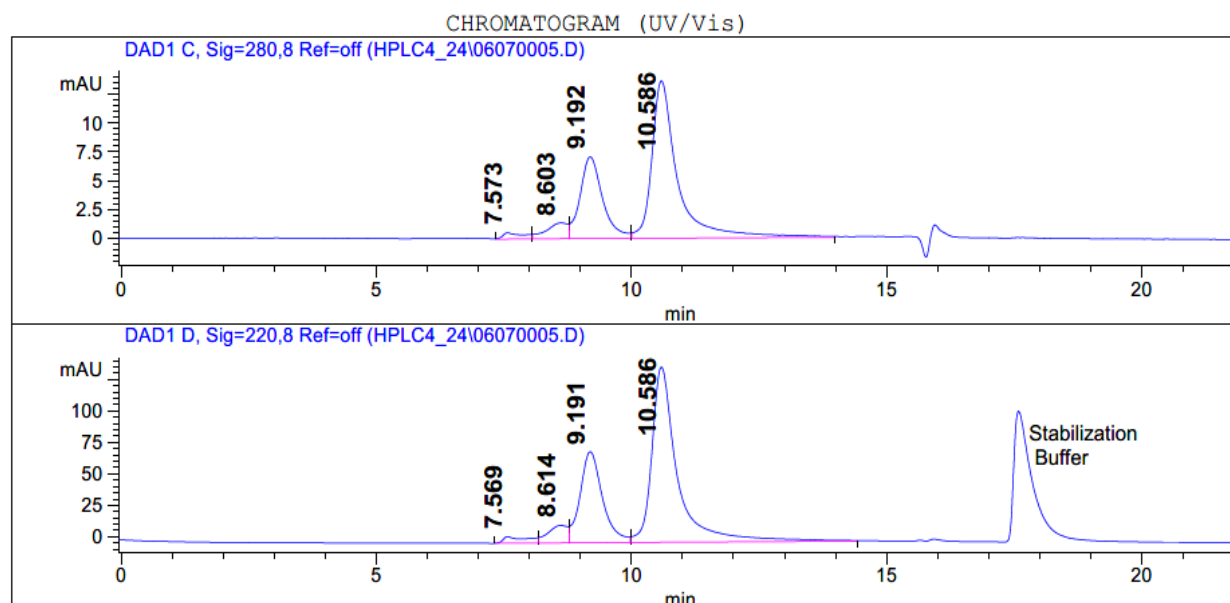
HPLC ANALYSIS DATA

Data Acquired By:QC
Sample Location:Vial 81
Sample Name:CM51100

Actual injection Volume:15.0 uL
Sequence Name:
Method:C:\HPCHEM\1\METHODS\C2-3001.M
Pressure: 38.5 bar
Flow: 0.750 uL/min
Temp (C): 25.0 C

-- SAMPLE INFORMATION --
ADC Control hIgG1-MMAE
S409.S20.0531D

SEC HPLC



Signal Description Wavelength(nm), Bw	Retention Time [Min.]	Area [mAU.s]	Area %
DAD1 C, Sig=280,8 Ref=off	7.573	15.5	2.0
	8.603	41.1	5.4
	9.192	218.2	28.8
	10.586	483.0	63.7
DAD1 D, Sig=220,8 Ref=off	7.569	176.6	2.3
	8.614	376.0	4.9
	9.191	2213.0	28.7
	10.586	4932.9	64.1

*****END OF REPORT*****