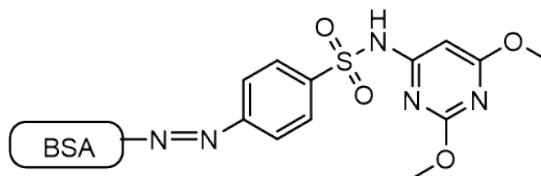


Certificate of Analysis

Description of the Material:

- (a) Chemical Name: Sulfadimethoxine-BSA
- (b) Molecular Weight: 73 KDa
- (c) Chemical Structure:



- (d) Appearance: Orange lyophilized powder
- (e) Amount: Each tube contains 1 mg of product.
- (f) Reconstitution: Dissolve in 94 μ L of deionized water plus 156 μ L of 1xPBS to achieve 4 mg/mL in 1xPBS buffer containing no preservative.

SKU Code and Lot Number:

- (a) SKU Code: CM52138-1MG
- (b) Lot Number: S413-50.S10.0831B

Purity, MS, and Other Information:

- (a) Purity: $\geq 99\%$ of conjugates (contain some aggregated forms)
- (b) MS Data: 73,174 Da (MALDI-TOF MS)
- (c) Other Information: A pool of heterogeneous sulfadimethoxine-BSA conjugates (the site of sulfadimethoxine labeling on the BSA may vary for individual components). Average of sulfadimethoxine (SMD) per BSA: ~ 20 by MS.

Intended use: For research and development use only.

Solubility: Soluble in water.

Hazard Information: See SDS.

Shelf life, Storage/Stability as Supplied: The conjugate is fairly stable as solid at ambient temperature. Recommended long-term storage is at -20°C or preferably in a -80°C freezer. After reconstitution, the stock solution could be used up to 1 week if stored at $2-8^{\circ}\text{C}$.

Expiration Date: 1 year after receiving if stored at -20°C or below.


Certified by: Yumei Huang

Certifying Officer: Yumei Huang

Date Appendix: HPLC and MS Data

Injection date: Wed, 31. Aug. 2022
C:\HPCHEM\1\DATA\HPLC2_22\08310006.D
Instrument: Instrument 1

Injection Time: 11:01:10 AM
Report Style: CM_Extar

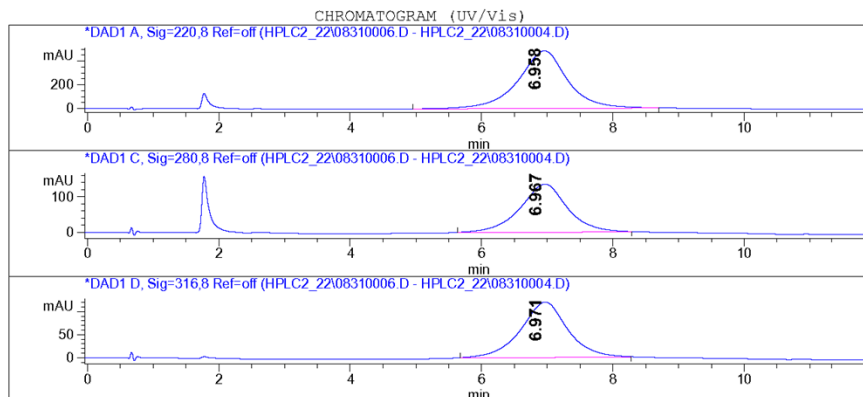
 CellMosaic, Inc. www.cellmosaic.com
10 A Roessler Road, Woburn, MA 01801, USA.

HPLC ANALYSIS DATA

Data Acquired By: CellMosaic QC
Sample Location: Vial 92
Sample Name: s413-50.s9

Actual injection Volume: 5.0 uL
Sequence Name:
Method: C:\HPCHEM\1\METHODS\C4TFAL1.M
Pressure: 67.2 bar
Flow: 1.000 mL/min
Temp (C): 40.0 C

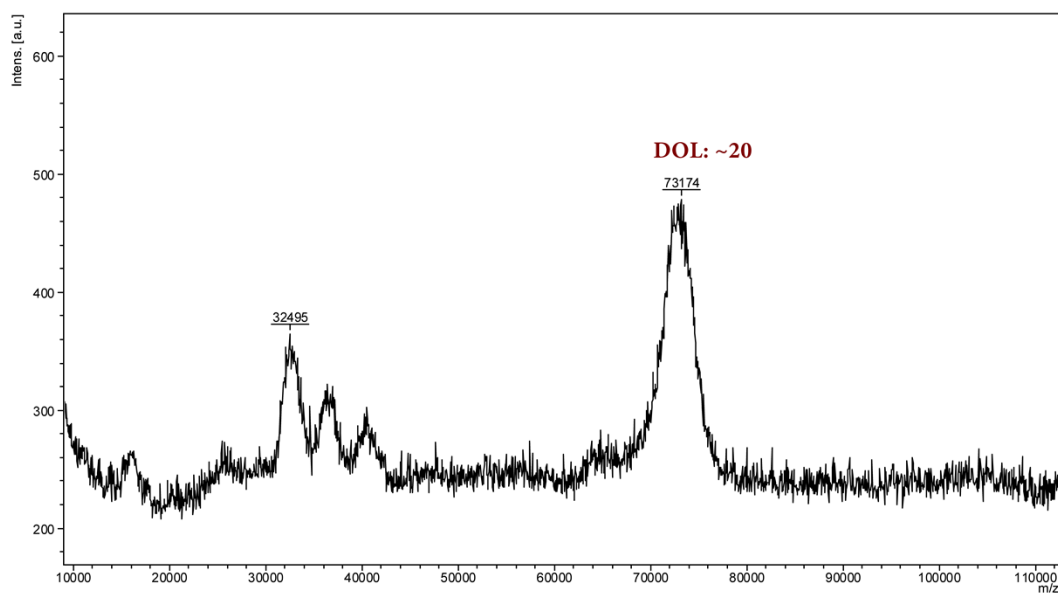
-- SAMPLE INFORMATION --
s413-50.s1
BSA-SMD 10.1x ->



Signal Description Wavelength(nm), Bw	Retention Time [Min.]	Area [mAU.s]	Area %
DAD1 A, Sig=220,8 Ref=off	6.958	25714.5	100.0
DAD1 C, Sig=280,8 Ref=off	6.967	6845.9	100.0
DAD1 D, Sig=316,8 Ref=off	6.971	6053.6	100.0

*****END OF REPORT*****

MALDI-TOF MS Data of Sulfadimethoxine-BSA Conjugate



Bruker Daltonics flexAnalysis

printed: 9/20/2022 1:23:08 PM