



CellMosaic, Inc.
10A Roessler Road
Woburn, MA 01801, USA
Phone: 781-463-0002; Fax: 781-998-4694; E-mail: info@cellmosaic.com

Certificate of Analysis

Description of the Material:

- (a) Chemical Name: BSA Creatinine L8 Conjugate
- (b) Molecular Weight: 68 KDa
- (c) Appearance: clear solution in PBS buffer
- (d) Concentration: 2.77 mg/mL solution
- (e) Amount: each tube contains 1 mg of conjugate

Material Code and Batch Number:

- (a) Part Number: CM52117-1MG or CM52117-5MG
- (b) Lot Number: S472.2.S8.0919C

Purity, MS Data, and Loading:

- (a) HPLC Analysis: $\geq 99\%$ conjugate
- (b) MALDI-TOF MS Data for Intact Conjugate: 68,279 Da
- (c) Average Creatinine Molecules per BSA: 8.0 by difference in MALDI-TOF MS

Intended Use: For research and development use only.


Applications: Immunization, ELISA, IHC, WB, Immunomicroscopy, Dot Blot, Flow Cytometry (recommended concentration for assay: 0.01-0.1 $\mu\text{g/mL}$)

Hazard Information: No known OSHA hazards. See SDS for details.

Shelf Life, Storage/Stability: The product is fairly stable as solution at ambient temperature. Recommended long-term storage is at -20°C or preferably in a -80°C freezer. The solution may be able to stay at $2-8^{\circ}\text{C}$ for a few weeks or -20°C for up to 1 year.

Expiration Date: 1 year after receiving if stored at -20°C or below.

Data Appendix: Size exclusion HPLC and MALDI-TOF MS Data.

 CellMosaic, Inc. www.cellmosaic.com
10 A Roessler Road, Woburn, MA 01801, USA.

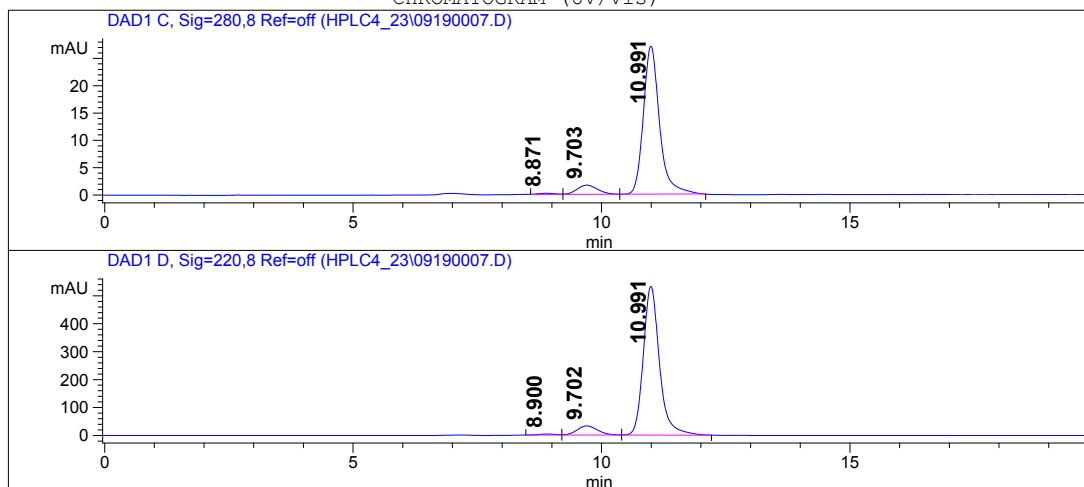
HPLC ANALYSIS DATA

Data Acquired By:QC
Sample Location:Vial 11
Sample Name:BSACreatinine S8

Actual injection Volume:10.0 uL
Sequence Name:
Method:C:\HPCHEM\1\METHODS\C2-3001.M
Pressure: 37.0 bar
Flow: 0.750 uL/min
Temp (C): 25.0 C

-- SAMPLE INFORMATION --
BSA Creatinine L8
S472.2.S8.0919C x2

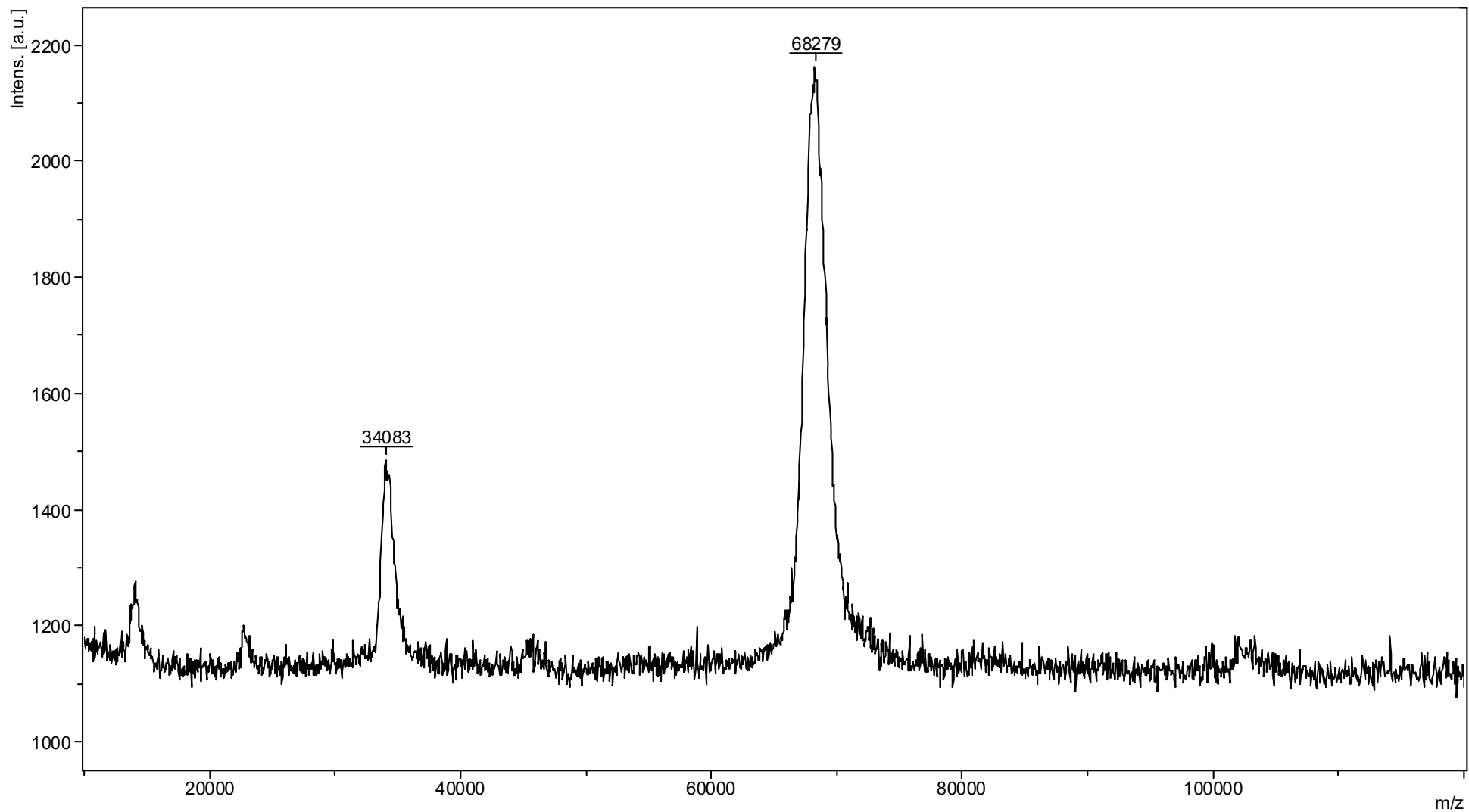
CHROMATOGRAM (UV/Vis)



Signal Description Wavelength(nm), Bw	Retention Time [Min.]	Area [mAU.s]	Area %
DAD1 C, Sig=280,8 Ref=off	8.871	5.2	0.8
	9.703	48.5	7.3
	10.991	614.7	92.0
DAD1 D, Sig=220,8 Ref=off	8.900	91.1	0.7
	9.702	966.2	7.4
	10.991	12080.2	92.0

*****END OF REPORT*****

MALDI-TOF MS of BSA Creatinine L8 (Lot#: S472.2.S8.0919C)



MALDI-TOF MS of BSA

