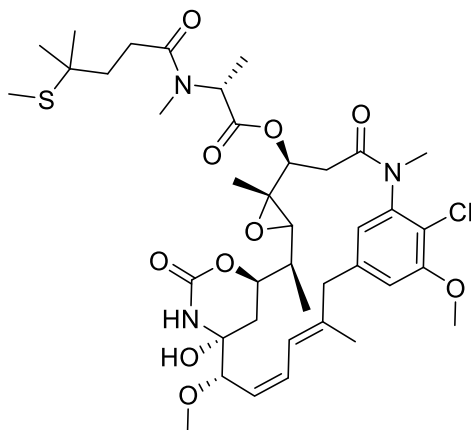


Certificate of Analysis

Description of the Material:

- (a) Chemical Name: S-Methyl DM4
- (b) Chemical Structure:



- (c) Molecular Weight: 794.40 Da
- (d) Chemical Formula: C₃₉H₅₆ClN₃O₁₀S
- (e) Appearance: solution
- (f) Concentration: 10 mM in DMSO (7.944 mg/mL)
- (g) Amount: each tube contains 1 mg (125.9 µL) of product

Material Code and Batch Number:

- (a) Material Code: CM11015-1MG
- (b) Lot Number: NB0320722

Purity and MS Data:

- (a) HPLC analysis: ≥99.9% of conjugates
- (b) MS analysis (MALDI-TOF): 794.1 [M+H] (Exact Mass: 793.34)

Intended Use: For research and development use only.

Hazard Information: See SDS.

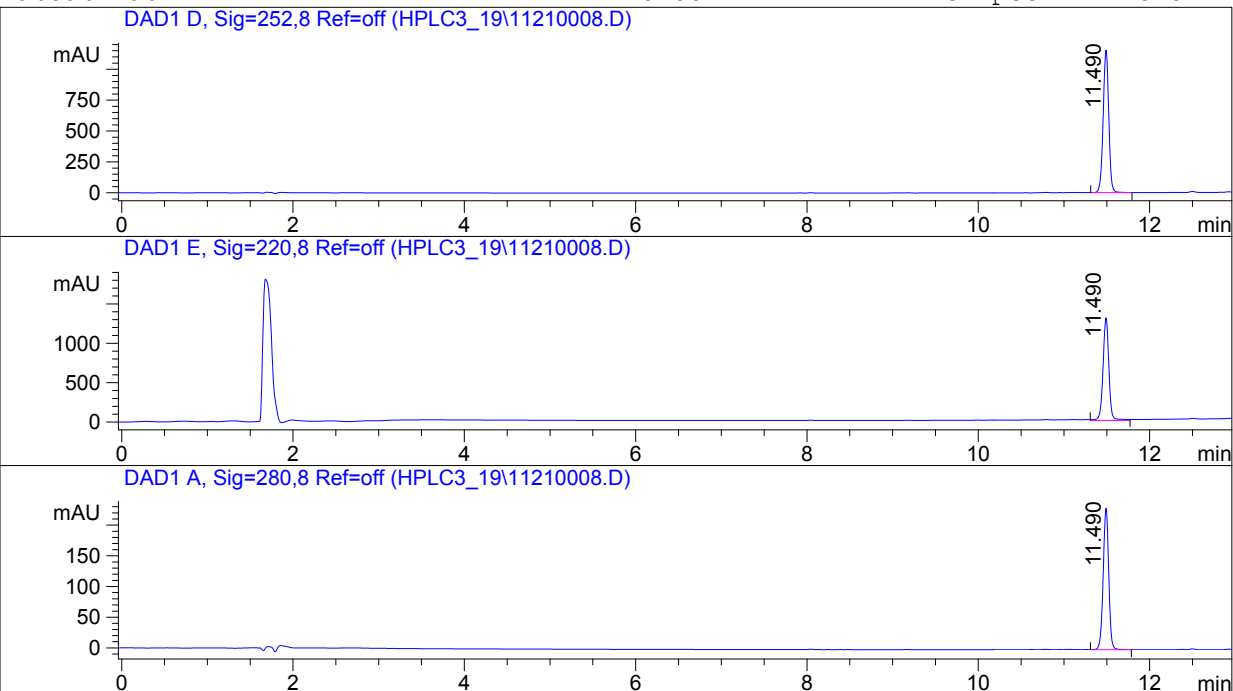
Shelf life, Storage/Stability: The product is fairly stable as solution at ambient temperature. Recommended long-term storage is at -20°C or preferably in a -80°C freezer.

Expiration Date: 1 year after receiving if stored at -20°C or below.

Data Appendix: C18 HPLC.

Data File name: C:\HPCHEM\1\DATA\HPLC3_19\11210008.D
 Method name: TFALSC6E.M
 Injection Time: 11:48:19 AM
 Injection Date: 11/21/2019

CellMosaic, Inc. Injection Volume: 5.000
 Instrument 1 Sequence Name:C:\HPCHEM\1\ ->
 Data Acquired By: CellMosaic QA Pressure (bar) : 156.720
 Location:Vial 91 Flow (mL/min) : 1000.000
 Sample Name:NB0320722 Temp (C) : Start Le->
 963967-902 B18185 Eclipse XBD-c18



| # | Meas.RT | Main Peak Area | Main Peak Area % | Main Peak Height |
|---|---------|----------------|------------------|------------------|
| 1 | 11.490 | 6235.885 | 100.000 | 1308.323 |

Total