

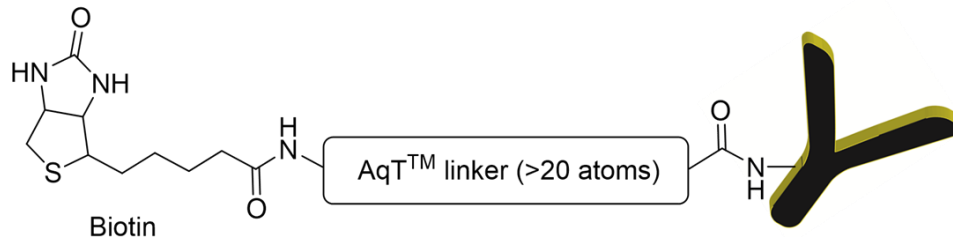
Certificate of Analysis

Material Code and Batch Number:

- (a) Material Code: CM86101
- (b) Lot Number: S356.S9.090421

Description of the Material:

- (a) Product Name: AqT™ Biotin G/H IgG, Fc gama fragment specific
- (b) Labeling Chemistry: Biotin is labeled at the surface amines of the antibody via a long and flexible super-hydrophilic AqT™ linker (>20 atoms length)



- (c) Molecule Weight: 154KDa
- (d) Physical Form: White to off-white lyophilized powder in a centrifuge tube.
- (e) Amount: each tube contains 100 µg of AqT™ Biotin G/H IgG
- (f) Country of Origin: USA

Antibody Information:

- (c) Antibody Specificity: Based on immunoelectrophoresis and/or ELISA, the antibody reacts with the Fc portion of human IgG heavy chain but not with the Fab portion of human IgG. No antibody was detected against human IgM or IgA, or against non-immunoglobulin serum proteins. The antibody may cross-react with immunoglobulins from other species.
- (d) Host/Isotype: Goat
- (a) Class: Polyclonal
- (b) Type: Secondary Antibody

Purity Specifications and Results:

- (a) Purity: Free of any unreacted AqT™ biotin
- (b) Purification Method: The antibody was purified by immunoaffinity chromatography. After biotinylation, the product was desalted to remove any unreacted AqT™ biotin.
- (c) Biotin Loading: 5.0 by HABA/Avidin biotin assay

Usage:

- (a) Reconstitution: Dissolve in 100 µL of deionized water to obtain 1 mg/mL solution in 1xPBS buffer containing 2 mg/mL of BSA.
- (b) Preservative: None

- (c) Suggested Working Concentration or dilution Range (actual dilution used must be determined experimentally)

Applications	Dilution (Suggested)
ELISA and Western Blot (WB)	1:20,000-1,400,000
Enzyme immunohistochemistry (IHC), Immunocytochemistry (ICC), Immunoprecipitation (IP)	1:500-1:5,000
Flow Cytometry	1:200-1:1,000

Intended use: For in vitro research use only, not for diagnostic or therapeutic use.

Hazard information: No known OSHA hazards. See SDS for details.

Shelf life, Storage condition and Expiration date: The conjugate is fairly stable as solid at ambient temperature. Recommended long-term storage is at -20°C or preferably at -80°C freezer. After reconstitution, the stock solution may be able to stay at 2-8°C for a few weeks or -20°C for a few months.

Expiration date: 1 year after receiving if stored at -20°C or below.

Data Appendix: Size exclusion HPLC Data.



CellMosaic, Inc. www.cellmosaic.com
10 A Roessler Road, Woburn, MA 01801, USA.

Size Exclusion HPLC Analysis Data

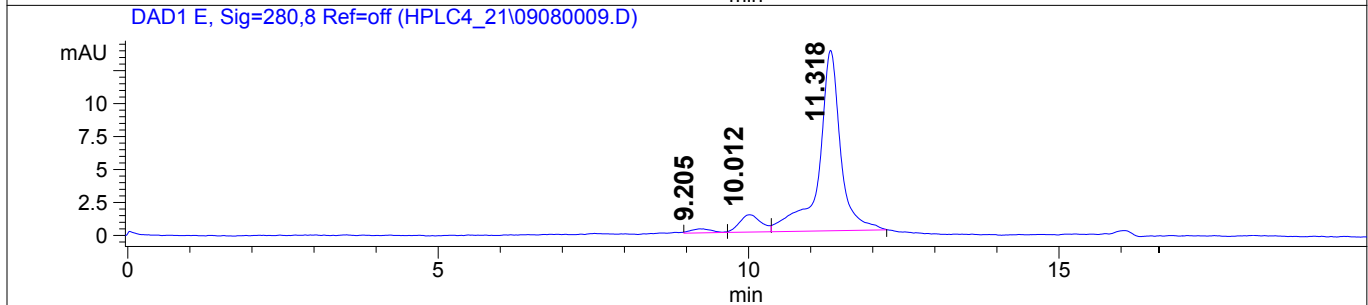
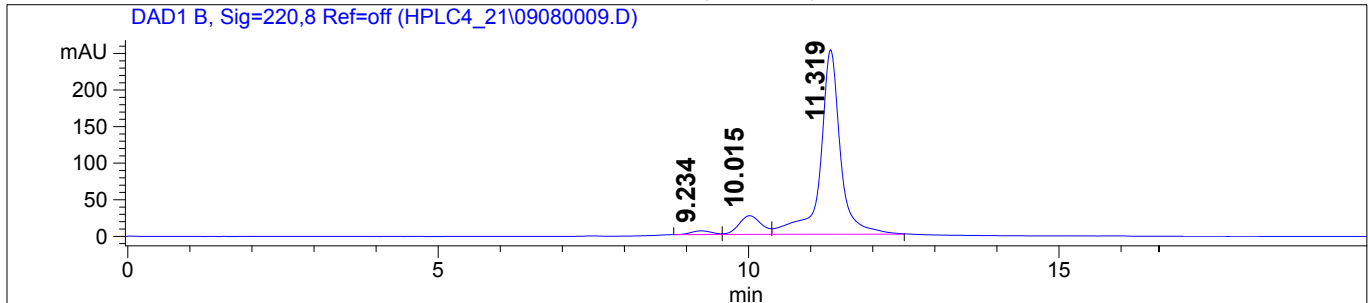
Data Acquired By: QC
Sample Location: Vial 33
Sample Name: s356.s9.090421

Actual injection Volume: 10.0 uL
Sequence Name:
Method: C:\HPCHEM\1\METHODS\TSK-L5.M
Pressure: 60.3 bar
Flow: 0.750 mL/min
Temp (C): 25.0 C

-- SAMPLE INFORMATION --
s356.s9.090421
0.5 mg/ml -->

**Purified AqT™ Biotin G/H IgG in
PBS containing BSA (After
Formulation)**

CHROMATOGRAM (UV/Vis)



Signal Description Wavelength (nm), Bw	Retention Time [Min.]	Area [mAU.s]	Area %
DAD1 B, Sig=220,8 Ref=off	9.234	119.4	1.9
	10.015	646.0	10.0
	11.319	5682.8	88.1
DAD1 E, Sig=280,8 Ref=off	9.205	7.3	2.0
	10.012	32.3	8.7
	11.318	332.3	89.3

*****END OF REPORT*****



CellMosaic, Inc. www.cellmosaic.com
10 A Roessler Road, Woburn, MA 01801, USA.

Size Exclusion HPLC Analysis Data

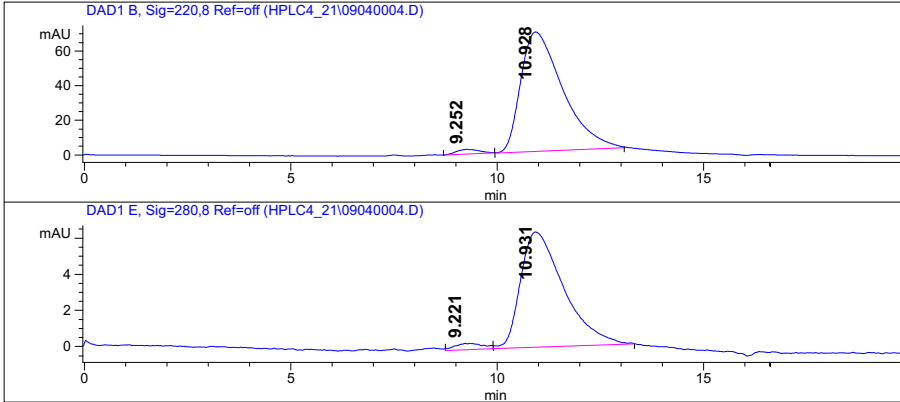
Data Acquired By:QC
Sample Location:Vial 31
Sample Name:S356.S6.090421

Actual injection Volume:30.0 uL
Sequence Name:
Method:C:\HPCHEM\1\METHODS\TSK-L5.M
Pressure: 59.2 bar
Flow: 0.750 mL/min
Temp (C): 25.0 C

-- SAMPLE INFORMATION --
S356.S6.090421
x3

**Purified AqT™ Biotin G/H IgG in PBS
(Before Formulation)**

CHROMATOGRAM (UV/Vis)



Signal Description Wavelength (nm), Bw	Retention Time [Min.]	Area [mAU.s]	Area %
DAD1 B, Sig=220,8 Ref=off	9.252	104.1	2.1
	10.928	4885.9	97.9
DAD1 E, Sig=280,8 Ref=off	9.221	15.7	3.3
	10.931	461.9	96.7

*****END OF REPORT*****



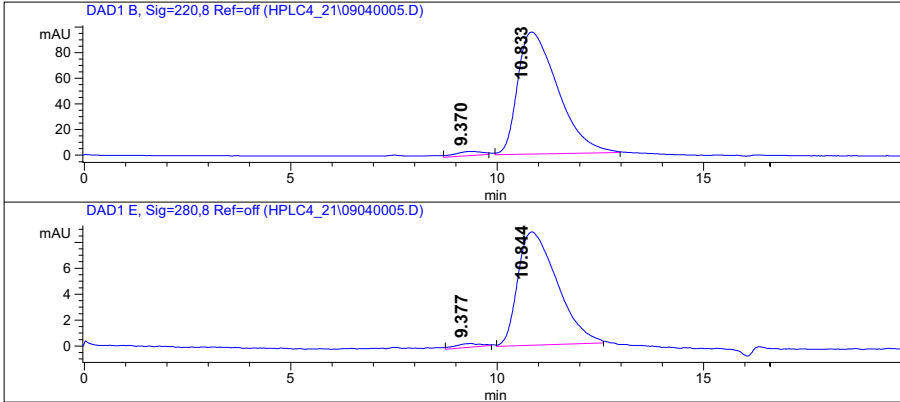
Data Acquired By:QC
Sample Location:Vial 33
Sample Name:S356.Ab only

Actual injection Volume:30.0 uL
Sequence Name:
Method:C:\HPCHEM\1\METHODS\TSK-L5.M
Pressure: 59.3 bar
Flow: 0.750 mL/min
Temp (C): 25.0 C

-- SAMPLE INFORMATION --
S356.Ab only
x5

-> **G/H IgG Only**

CHROMATOGRAM (UV/Vis)



Signal Description Wavelength (nm), Bw	Retention Time [Min.]	Area [mAU.s]	Area %
DAD1 B, Sig=220,8 Ref=off	9.370	131.9	2.0
	10.833	6429.0	98.0
DAD1 E, Sig=280,8 Ref=off	9.377	11.7	2.0
	10.844	578.0	98.0

*****END OF REPORT*****